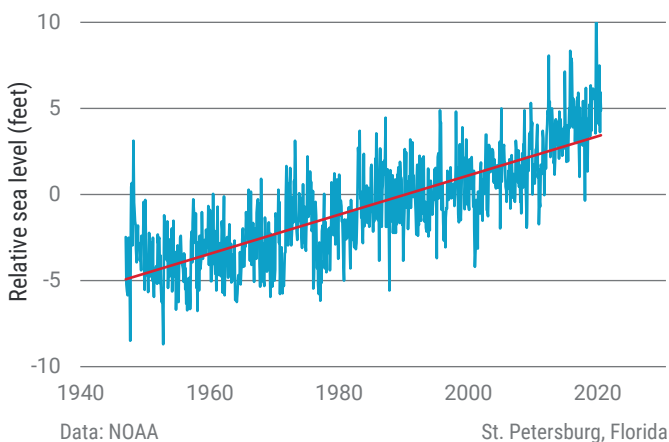


# CLIMATE CHALLENGES

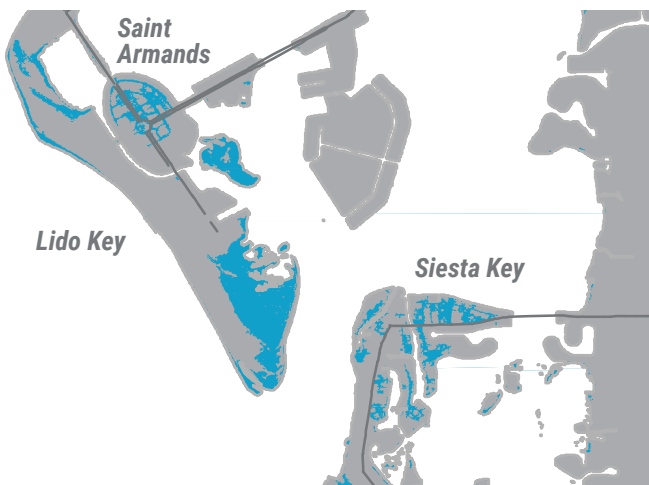
## Coastal Neighborhoods

### Sarasota & Manatee Counties, Florida

Sea level has risen 7.8 inches locally since 1946. Based on current greenhouse gas emissions and warming, the National Oceanic and Atmospheric Administration (NOAA) projects regional sea level may rise 1–1.4 feet between 2000–2050 and 1.9–3.9 feet between 2000–2100. With melting of global ice sheets, seas could rise 2.6 feet by 2050 and 8.5 feet by 2100.



Rising seas will magnify the height and inland reach of high tides and storm surge and cause increased erosion, repeated flooding, and loss of coastal habitats and development. Two feet of sea level rise will have profound impacts; with 3–4 feet, significant land areas including emergency routes will be underwater. **Explore** inundation scenarios at [coast.noaa.gov/slr](https://coast.noaa.gov/slr).



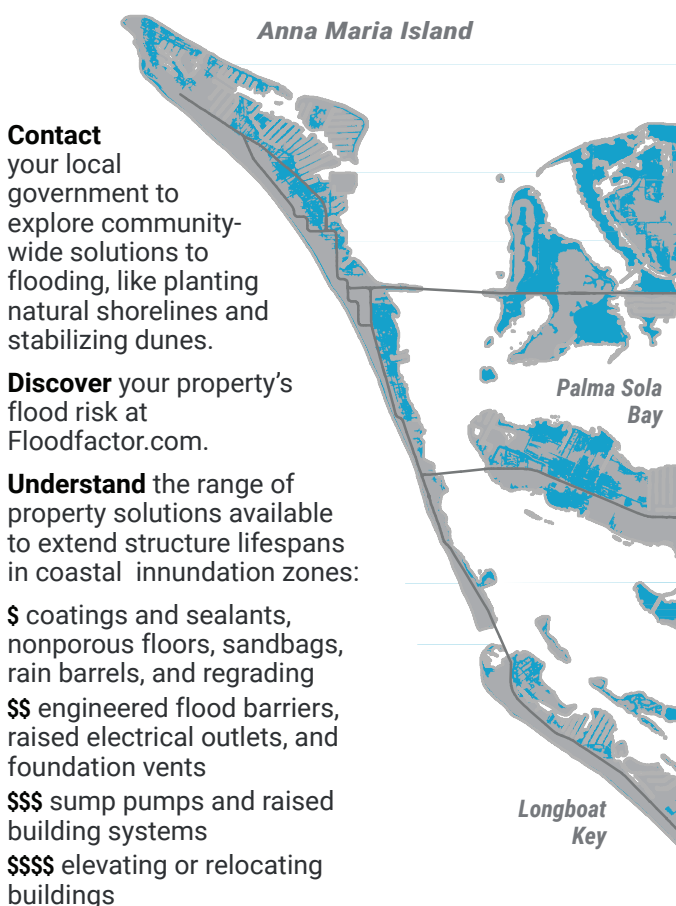
Projected inundation of 2 feet of sea level rise shown in blue. Data: NOAA.

# CLIMATE SOLUTIONS

## Coastal Neighborhoods

### Sarasota & Manatee Counties, Florida

Conserving energy and transitioning to renewable energy sources will slow climate change, but we still need to adapt to sea level rise already underway.



## Watch Now!

## CLIMATE STORIES VIDEO SERIES

[ScienceAndEnvironment.org/Climate](https://ScienceAndEnvironment.org/Climate)

Featuring local commentators:

**RUSTY CHINNIS**

Longboat Village Resident

**ALLYSON WITT**

Palma Sola Park Resident

**TOM BARWIN**

Former City Manager, City of Sarasota

2020-12